

**Monaghan County Council
Part 8 Planning Application
for an Inert Bituminous
Material Reception,
Storage, Transfer and
Processing Facility**

Glenmore Quarry, Carrickroe, Co. Monaghan

[Additional Information](#)

List of Figures

Figure 1: OPW Flood Maps..... 5

Figure 2: Aerial photo of site 1

1. Introduction

Monaghan County Council are applying for planning permission to upgrade existing facilities to include a hard-standing area, weighbridge and welfare facilities for reception, storage and transfer of inert bituminous materials at Glenmore Quarry, Carrickroe, Co. Monaghan. This development will store bituminous inert material from road works (cold-millings). The bituminous inert materials are a byproduct of road rehabilitation, and they are to be stored at the site before they are processed into a Reclaimed Asphalt Pavement (RAP). No changes will be made to the existing ground levels on site.

2. Site Description

The site is located in the townland of Glenmore, c. 3km from Carrickroe. The site is accessed from the LP1135 local primary road. It is situated near the R186-1 Monaghan-Clougher Regional Road. Monaghan County Council currently uses the site as a reception, storage and processing facility for bituminous inert material. The site currently consists of a disused quarry. The site boundaries are defined with a 1.8m security fence at the existing site entrance onto the LP1135. A site location map is shown in this Part 8 Application.

3. Process Description

The site will receive bituminous inert material from the county-wide road network. Similar to current activities, bituminous inert material will be brought to the site by haulage trucks and placed in the designated inert material storage area. All loads delivered to the site will be checked and recorded. The activities at the site currently operate from 7 am-4.30 pm Monday to Friday and will continue to do so under the proposed development. Monaghan County Council will hold a key to access the delivery site or use mobile phone technology to open and close gates for deliveries. The site will be securely locked at all other times to prevent unauthorised access.

The quantity of bituminous inert material stored at any given time will be similar to current levels of approximately 10,000 tonnes. The height of stockpiles will be limited to 4 metres.

The sources of bituminous inert material will depend on future projects in the area. Most bituminous inert material delivered to the site is expected to be from within a 10-50km radius of the site. Sources of bituminous inert material are road maintenance and improvement works and other public housing and construction works in the area.

Inert material will be transported to the site by authorised hauliers.

4. Entrance Sightlines

Access to the proposed development will be via the existing entrance to the council site. The National Roads Authority, Design Manual for Roads and Bridges, Roads Geometry Handbook, Section 2.22, and Monaghan County Development Plan 2019 - 2025, Section 15.27 Roads Access Standards and Appendix 13 (Access Details) were consulted in determining the sightlines achievable at the site entrance. The length of the visibility splay outlined in the Monaghan County Development Plan 2019 – 2025 for Local Primary road access is 90m from a set back distance of 2.4m. Visibility in a vertical plane should typically be provided from a driver's eye height of 1.05m to 2.00m to an object height between 0.26m and 2.0m. The sightlines and access details are adequate in Drawing Glenmore Quarry Upgrade Rev1.

5. Traffic

The proposed activities associated with the development are a continuation of the existing activities, and there is not expected to be any change in traffic volumes. Traffic volumes to the site are expected to be low. Over a 10-year projection, the average deliveries are predicted at 1-2 deliveries/transfers per day to/from the site, which is likely to continue over the expected life of the site. However, depending on future projects in the area, larger traffic volumes may occur at the site over a shorter time frame.

6. Surface Water

There are no surface water features on this site. All bituminous inert material will be handled and stored in the proposed hard-standing area. A drainage channel on the perimeter of the hard-standing area will collect stormwater falling on this area and direct it to the proposed silt trap and oil interceptor before soakaway. This drainage system will intercept any sediment (e.g. soil, stones, etc.) in the stormwater runoff before outfall to a suitably sized soakaway designed to BRE digest 365. All foul and waste water will be captured in a suitably sized effluent tank on site due to the limited usage of the site.

There is no record of any flood events at the proposed site. The OPW Flood Maps Website (www.floodinfo.ie) was consulted concerning available historical or anecdotal information on flooding incidences or occurrences near the proposed site. Figure 1 illustrates mapping from the Flood Maps website near the site. Figure 1 indicates no recorded or anecdotal instances of flooding at or in the site's immediate vicinity.

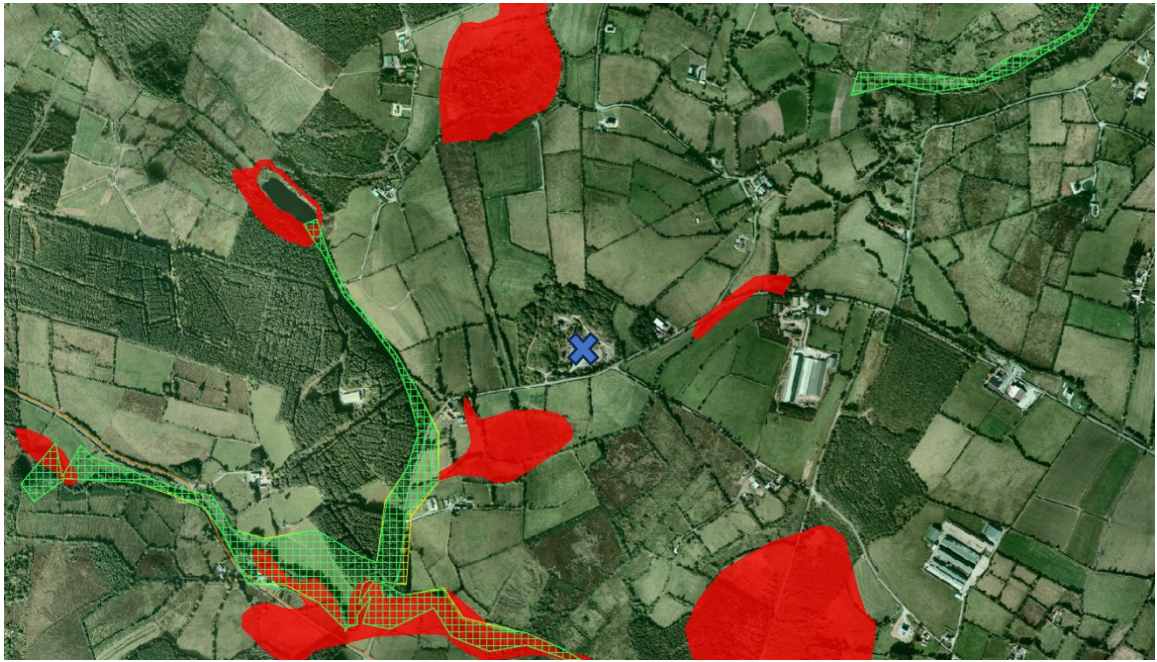


Figure 1: OPW Flood Maps (Site Blue X)

7. Dust & Noise

Materials to be handled and stored at this site will be mainly bituminous inert material such as cold-millings. Therefore, these materials will not give rise to excessive dust emissions.

The following potentially dusty activities currently occur on the site and will continue at the proposed site:

- Lorry movement
- Offloading and loading of bituminous inert material

8. Landscape

Monaghan County Council currently uses the site as a reception, storage and processing facility for bituminous inert material. A hard-standing area, weighbridge and welfare facilities are proposed for the site. This infrastructure will have a low visual impact. The surrounding landscape mainly comprises agricultural land and some residential housing. The site is situated on the LP1135 road. The site boundaries are defined with a 1.8m security fence and the existing site entrance onto the LP1135. An aerial photo of the site is provided in Figure 2.

Hedgerows are established on the western, northern and eastern boundaries. The hedgerows and trees on the southern boundary will screen the site from the adjoining areas. There is also a hedgerow on the southern roadside boundary. This will assist in screening the site from the LP1135 road.

9. Environmental Considerations

Monaghan County Council commissioned Flynn Furney to carry out a Stage 1 Appropriate Assessment (AA) Screening Report for the site. The screening exercise aimed to determine whether the proposed construction and operation of the facility would have the potential to impact the conservation objectives and overall integrity of any Natura 2000 sites significantly or indeterminately. The assessment was based on desk research and fieldwork by suitably qualified ecologists. The report included in this Part 8 application has been completed to provide information regarding the ecological status of the proposed site of works.

The AA screening report concluded that because of the best and objective scientific knowledge and in view of the conservation objectives of the European sites reviewed in the screening exercise, the proposed development is not likely to have any significant effects on any European sites. It was then recommended that Appropriate Assessment is not required

Part 8 Planning Application for an bituminous inert material Reception, Storage, and Processing Facility



Figure 2: Aerial photo of the site

Monaghan County Council's Environment Section has also been consulted regarding this application and has had several comments. The following conditions will be in place on the site during construction and operation:

1. An Emergency Response Plan shall be in place
2. A surface water management plan shall be in place
3. A spoil management plan shall be in place
4. A Construction Environmental Management Plan (CEMP) shall be in place.
5. A Waste Management shall be in place.
6. An invasive species prevention and eradication plan shall be in place.
7. Consultations shall occur with the National Parks and Wildlife Service before and during construction to ensure no impact on wildlife and their habitat.
8. Adequate measures shall be in place for the construction phase to ensure no discharge of polluting matter/sediment-laden waters to any watercourse.
9. Any compound area for storing plant, equipment, and materials and providing the contractors' welfare facilities shall be set back 50 metres from the edge of any watercourse.
10. Any hazardous liquid waste, chemicals or oil/fuel storage containers, temporary or otherwise, shall be bunded and located within the Compound Area.
11. Any refuelling of plant and equipment shall only occur within a Compound.
12. Any dry materials/chemicals shall be stored in sealed metal containers and managed to prevent the discharge of polluting matter to ground or surface water.