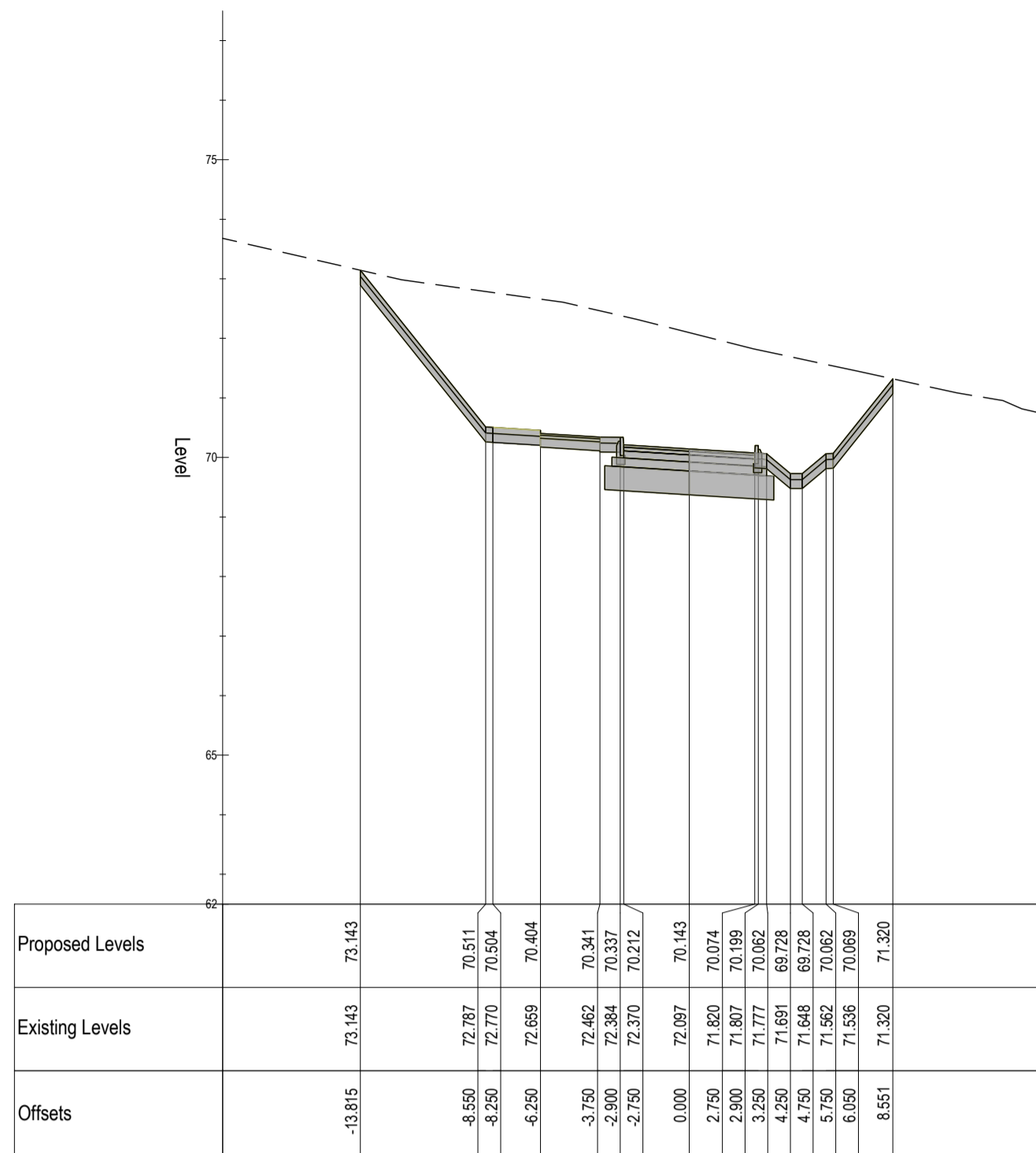




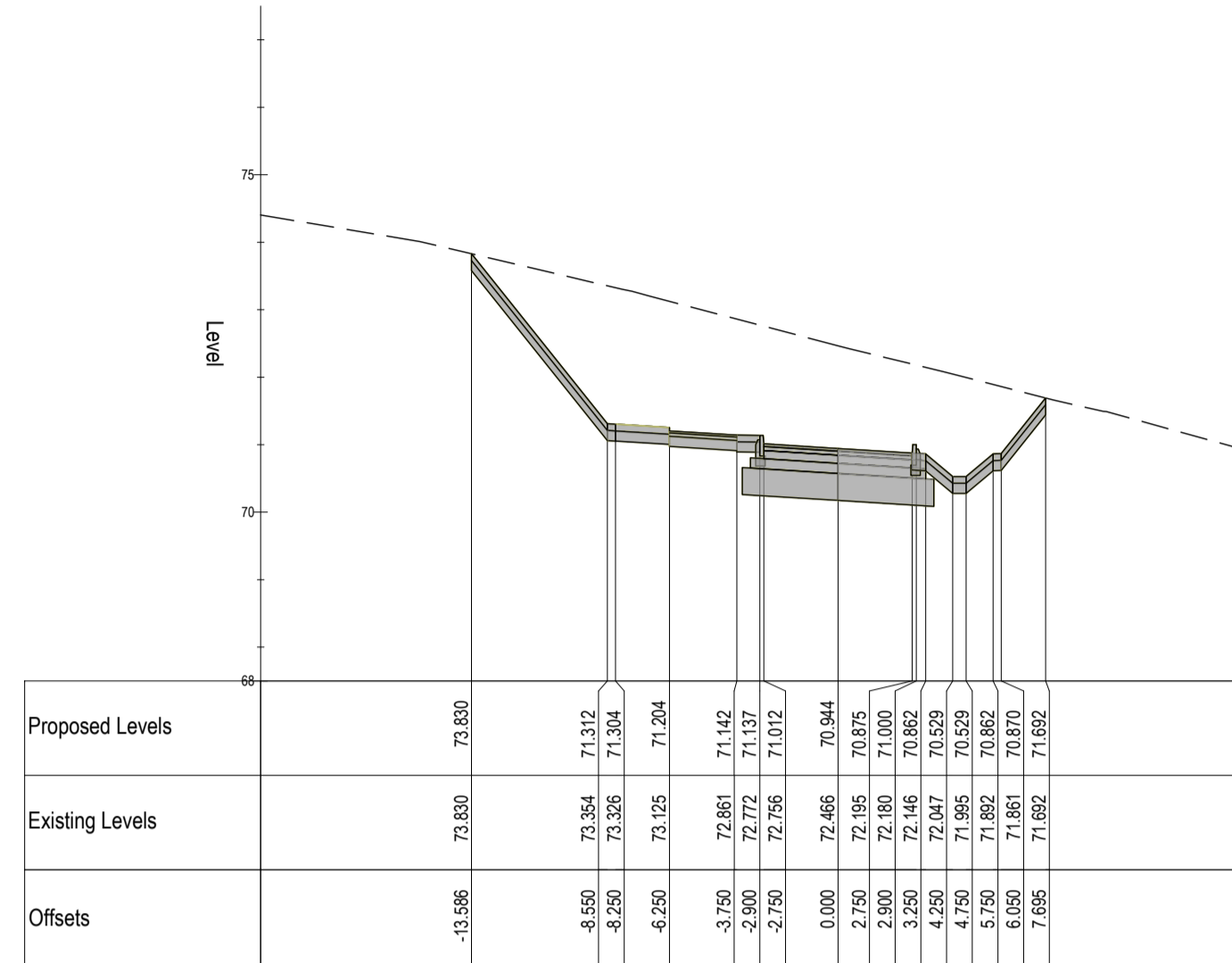
© COPYRIGHT OF THIS DRAWING IS RESERVED BY DBFL CONSULTING ENGINEERS. NO PART SHALL BE REPRODUCED OR TRANSMITTED WITHOUT THEIR WRITTEN PERMISSION.

NO CHANGES OF WHATSOEVER NATURE ARE TO BE MADE TO ANY DETAILS SET OUT OR CONTAINED IN ANY DBFL SPECIFICATIONS OR DRAWINGS UNLESS THE EXPRESS CONSENT HAS BEEN OBTAINED IN ADVANCE, IN WRITING, FROM DBFL.

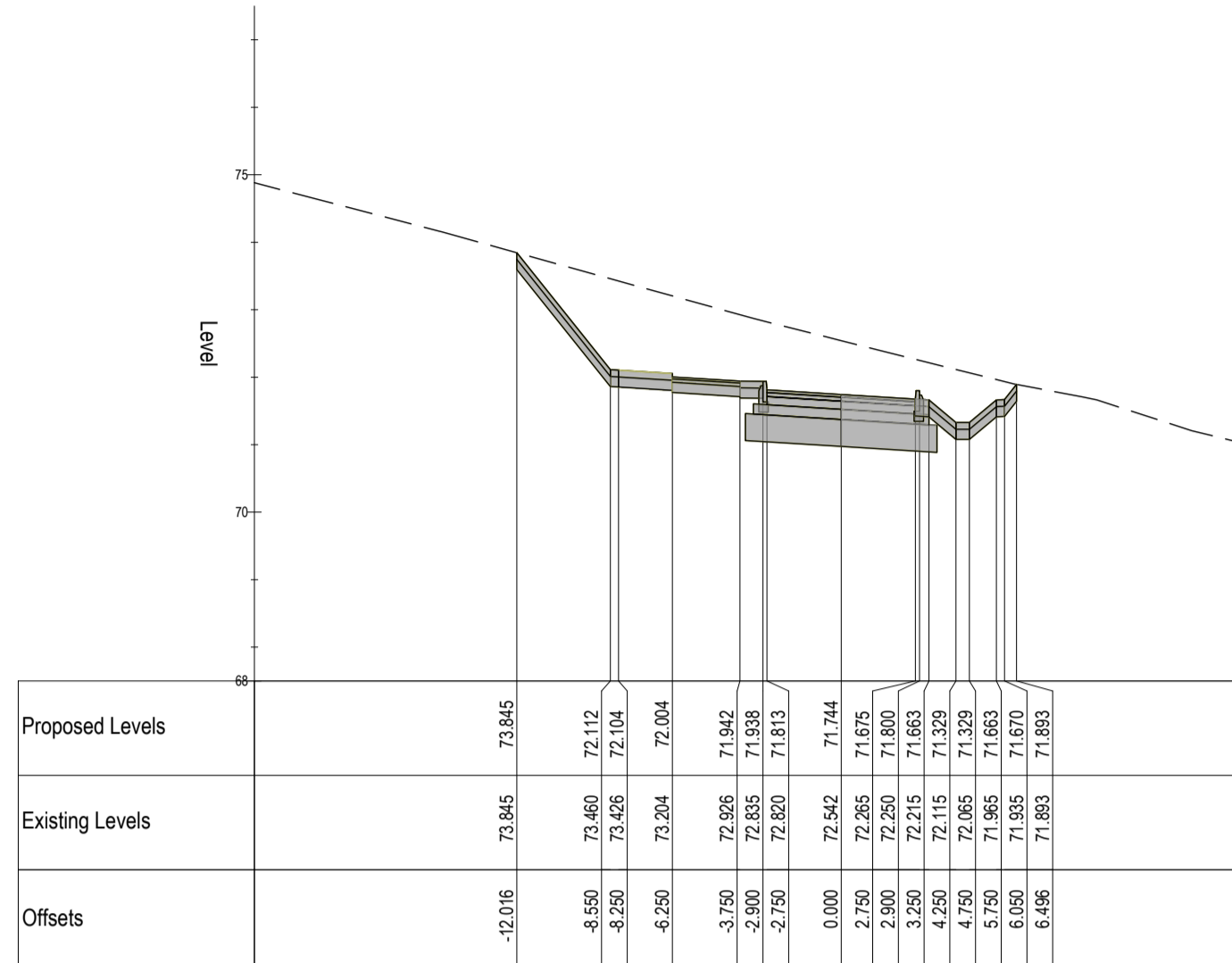
NOTES:



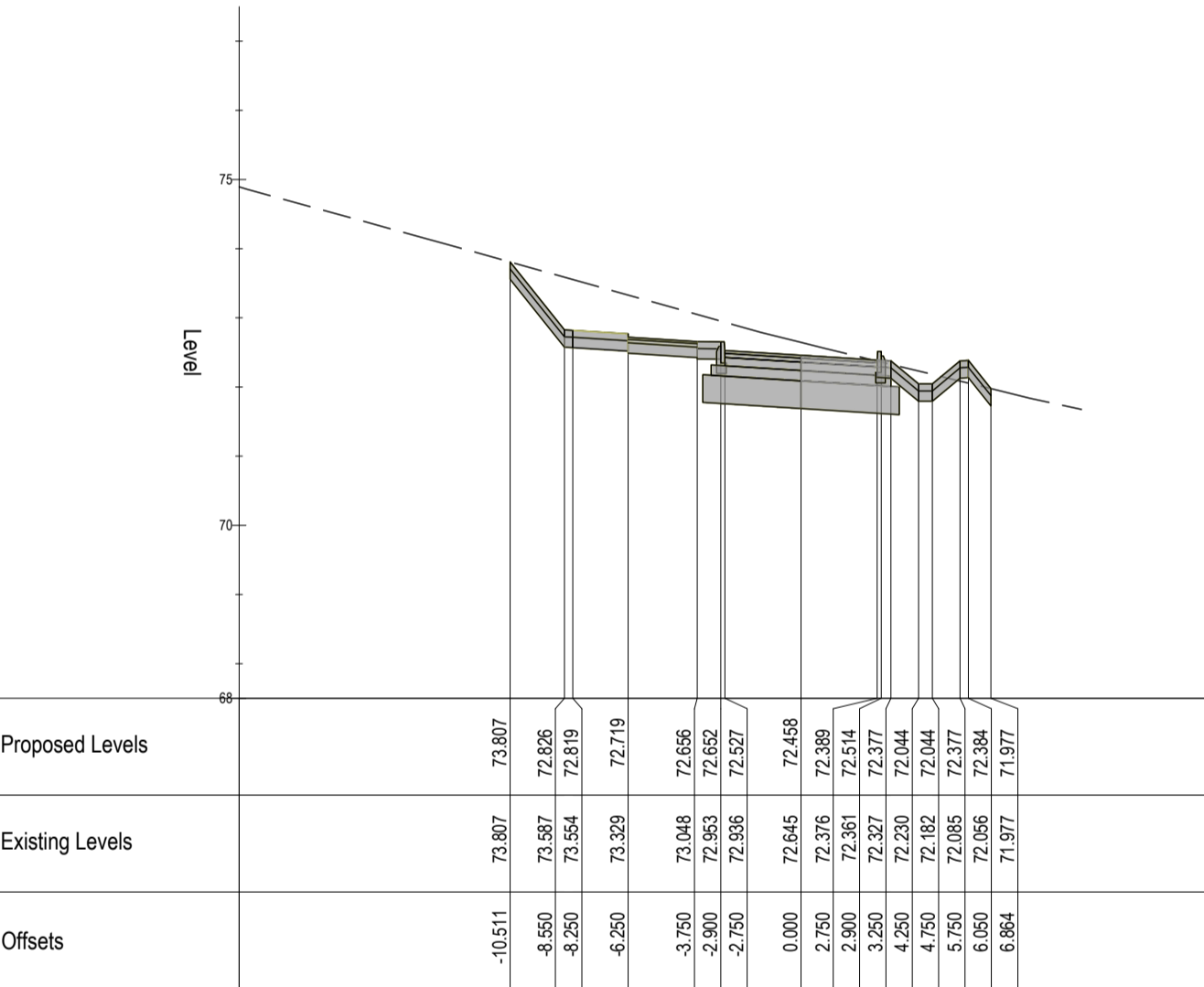
QUARRY WALK
Chainage 340.000



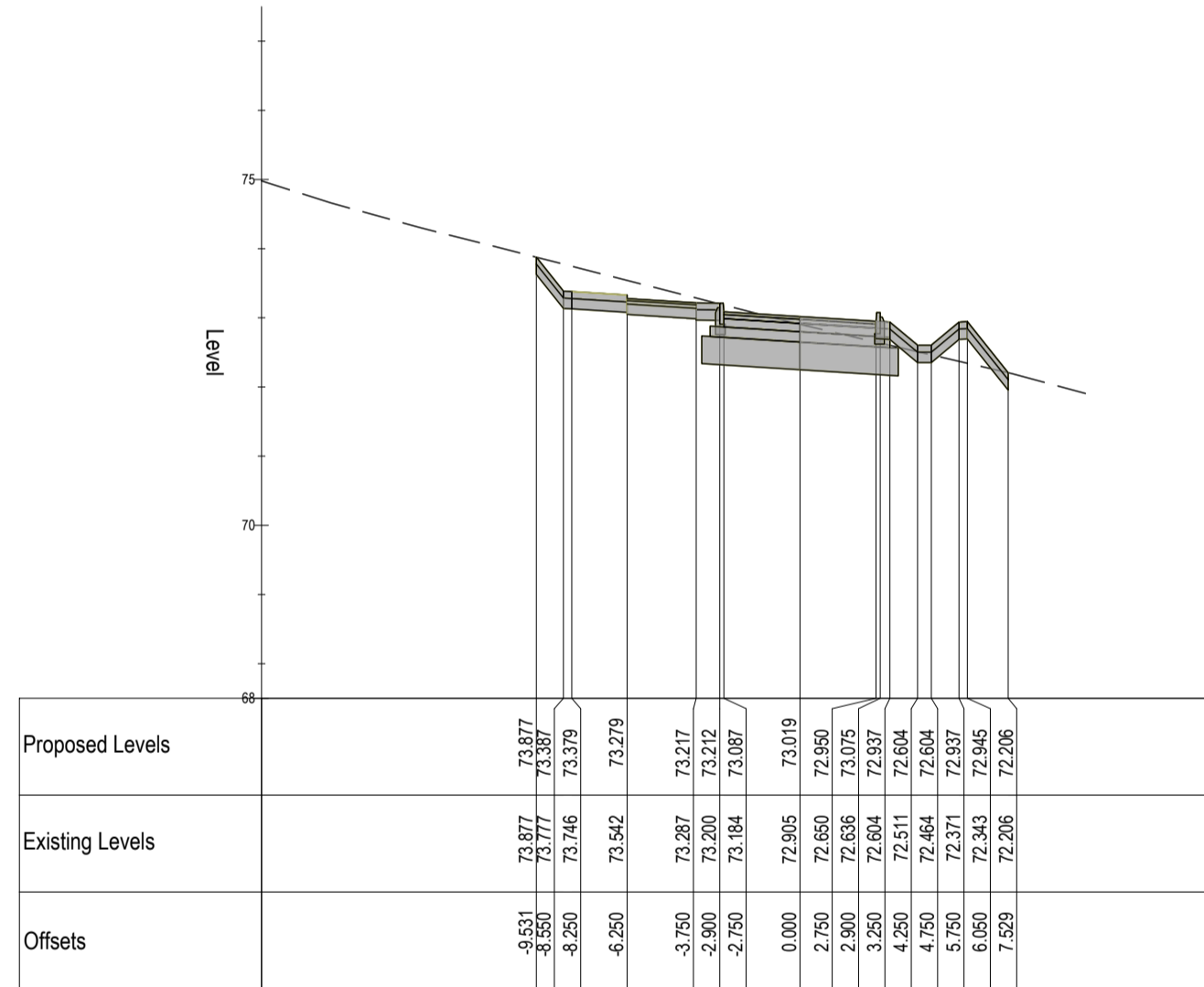
QUARRY WALK
Chainage 350.000



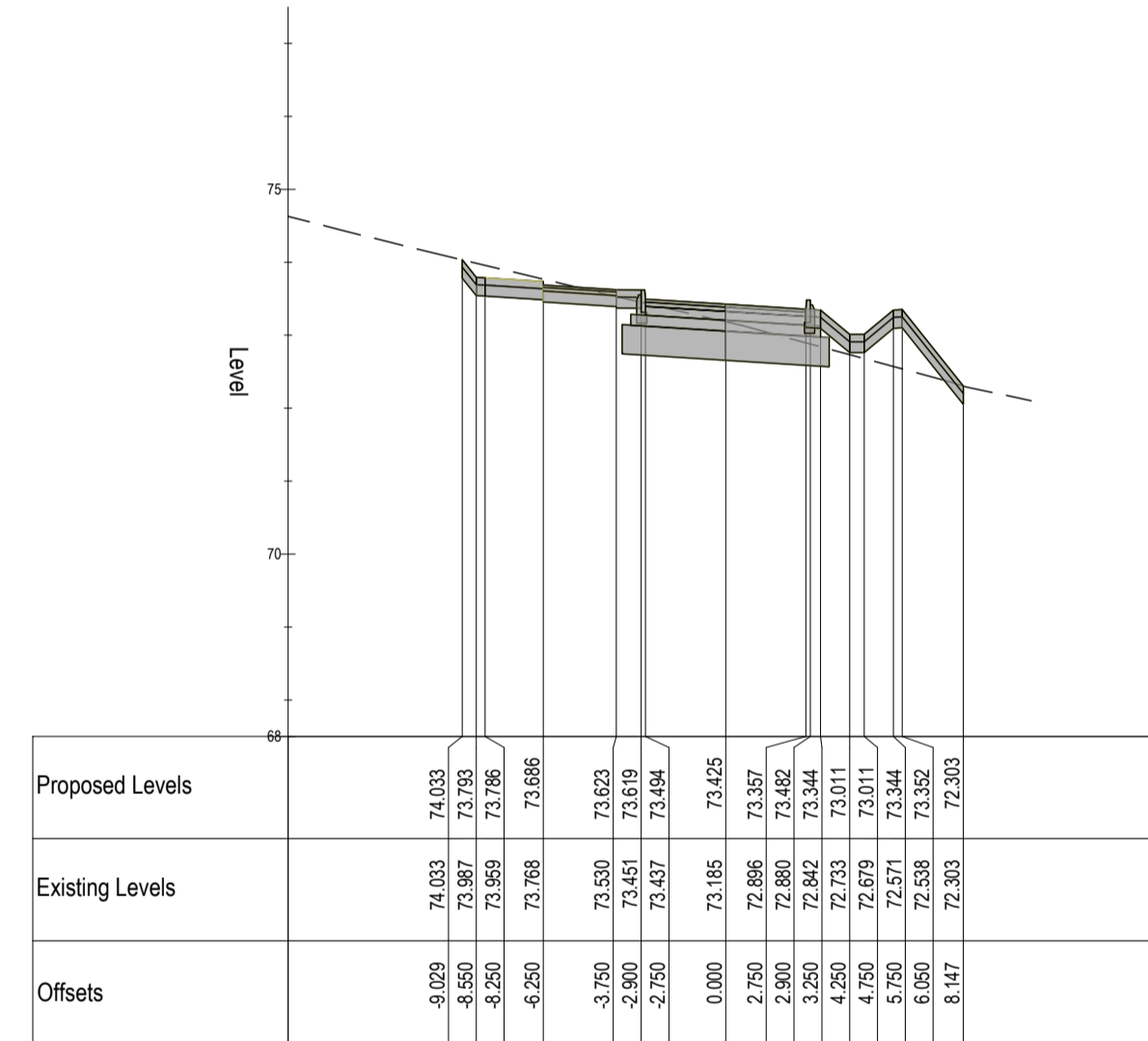
QUARRY WALK
Chainage 360.000



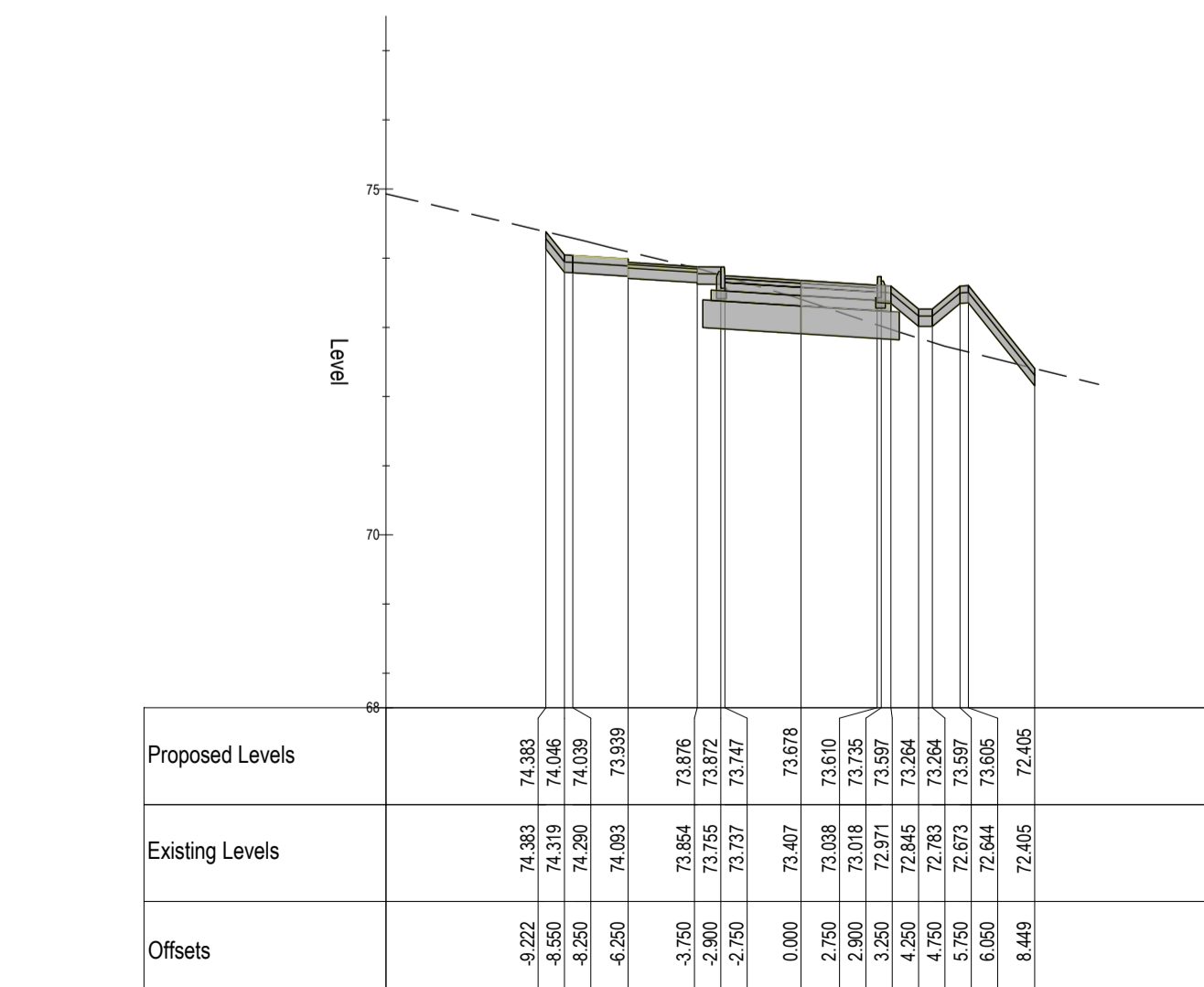
QUARRY WALK
Chainage 370.000



QUARRY WALK
Chainage 380.000



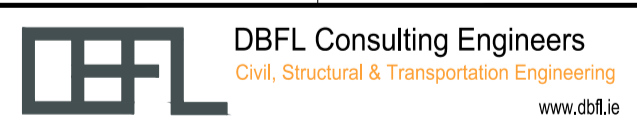
QUARRY WALK
Chainage 390.000



QUARRY WALK
Chainage 400.000

0	2011/2023	ISSUED FOR PLANNING	KMM	JPC
rev	date	description	by	chkd.

STATUS CODES	
purpose	acceptance
P3 - PLANNING PERMISSION	S - ISSUED



DUBLIN OFFICE: Ormond House, Upper Ormond Quay, Dublin 7, D07 W704
PHONE: +353 1 451 4300
CORK OFFICE: 14 South Mall, Cork, T12 CT91
PHONE: +353 21 2024538
WATERFORD OFFICE: Sea-Ed The Atrium, Maritime Gate, Canada Street, Waterford, X91 W028
PHONE: +353 51 309 560

project ref.

CIVIC OFFICES

drawing title

QUARRY WALK - CROSS SECTIONS - SHEET 4

client

MONAGHAN COUNTY COUNCIL

designed by	author	scale	sheet size
KM	RC	1:250 H:100 V	A1
drawing no.	revision		
220084-RY-04-Z00-XXX-DR-DBFL-CE-3214	0		