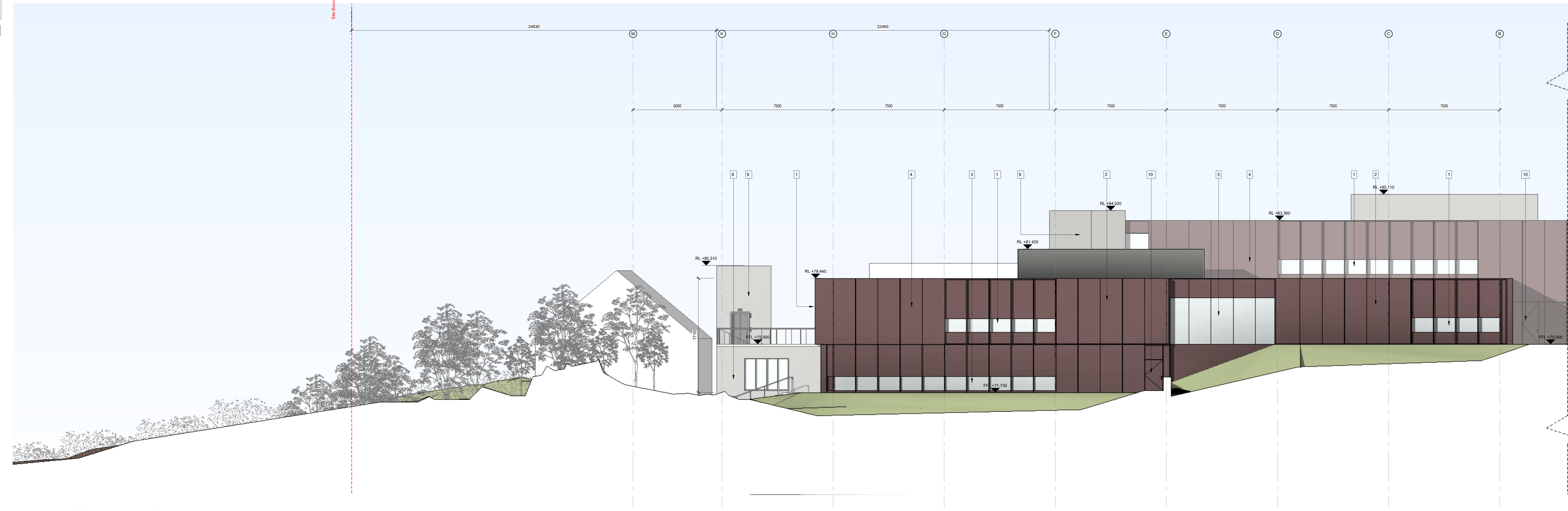
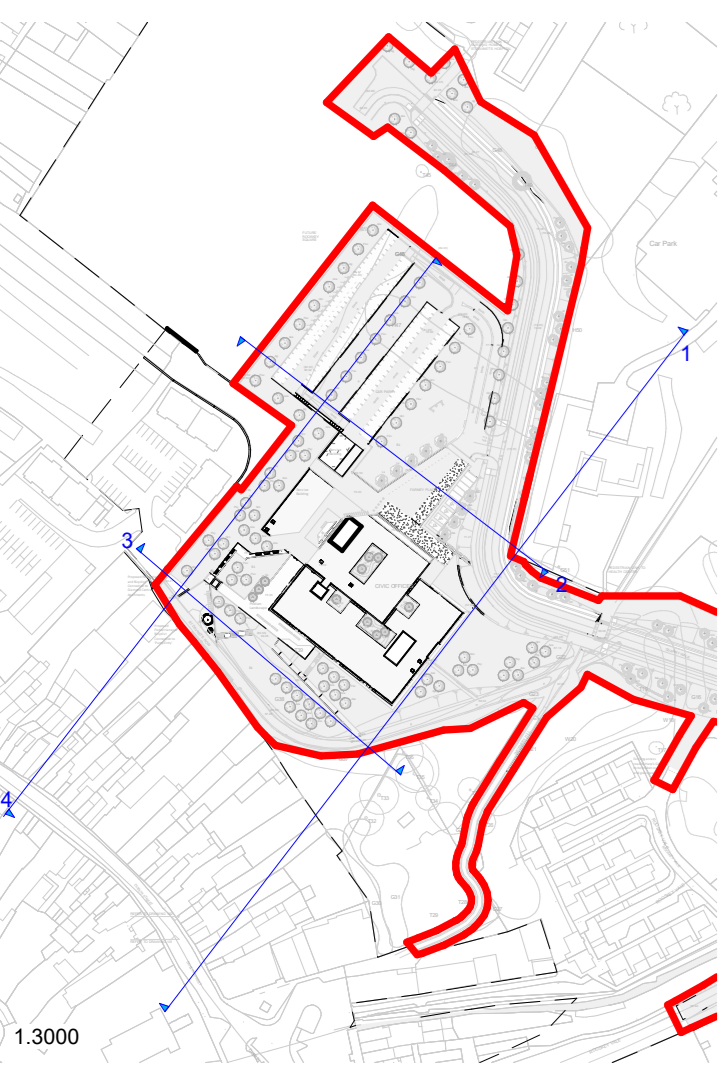


Note: Survey by Apex Surveys, July 2022
 Datum: Mean High (OSMAG15)
 OS License: 2023/001_NMA_158 Monaghan County Council

KEY:
 Site boundary subject to planning application

- LEGEND
1. DOUBLE GLAZED CURTAIN WALLING SYSTEM WITH POWDER COATED ALUMINIUM COLOURED FINES AND PERFORATED POWDER COATED MESH IN SELECTED COLOUR
 2. COMPOSITE WALL PANEL WITH PERFORATED MESH RANGREEN CLADDING IN SELECTED POWDER COATED ALUMINIUM COLOUR
 3. DOUBLE GLAZED CURTAIN WALLING SYSTEM WITH SELECTED POWDER COATED ALUMINIUM COLOURED FINES AND PERFORATED POWDER COATED MESH IN SELECTED COLOUR
 4. PERFORATED MESH RANGREEN CLADDING IN SELECTED POWDER COATED ALUMINIUM COLOUR
 5. STRUCTURALLY GLAZED CURTAIN WALLING SYSTEM
 6. SELECTED NATURAL STONE CLADDING
 7. DOUBLE GLAZED DOOR WITH POWDER COATED ALUMINIUM FRAME TO SELECTED COLOUR
 8. POWDER COATED ALUMINIUM RAILINGS TO SELECTED COLOUR
 9. GLASS REVOLVING DOOR WITH POWDER COATED ALUMINIUM FRAME IN SELECTED COLOUR
 10. DOUBLE GLAZED GLASS DOOR WITH POWDER COATED ALUMINIUM FRAME TO SELECTED FINISH
 11. DOUBLE GLAZED CURTAIN WALLING SYSTEM WITH SELECTED POWDER COATED ALUMINIUM FINES IN SELECTED COLOUR
 12. EXTERNAL RENDER SYSTEM IN SELECTED COLOUR
 13. EXPOSED EXTERNAL SOFFIT IN SELECTED POWDER COATED ALUMINIUM FINISH
 14. PERFORATED MESH GATE IN POWDER COATED ALUMINIUM TO SELECTED COLOUR
 15. 2.1 x 2.1m BACKLIT SIGNAGE PANEL IN SELECTED FINISH TO INCLUDE MONAGHAN COUNTY COUNCIL LOGO



1 SITE CONTIGUOUS ELEVATION - EAST A
 1:100



2 SITE CONTIGUOUS ELEVATION - NORTH A
 1:100