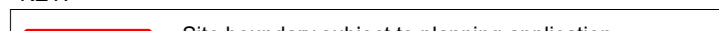
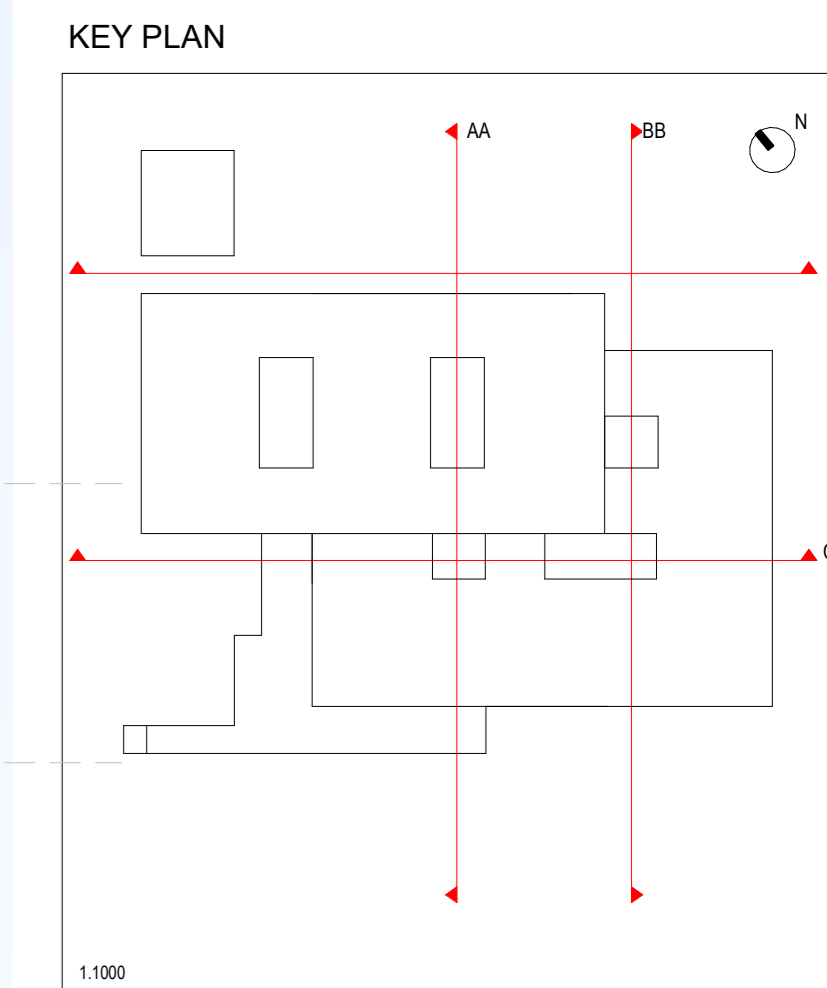
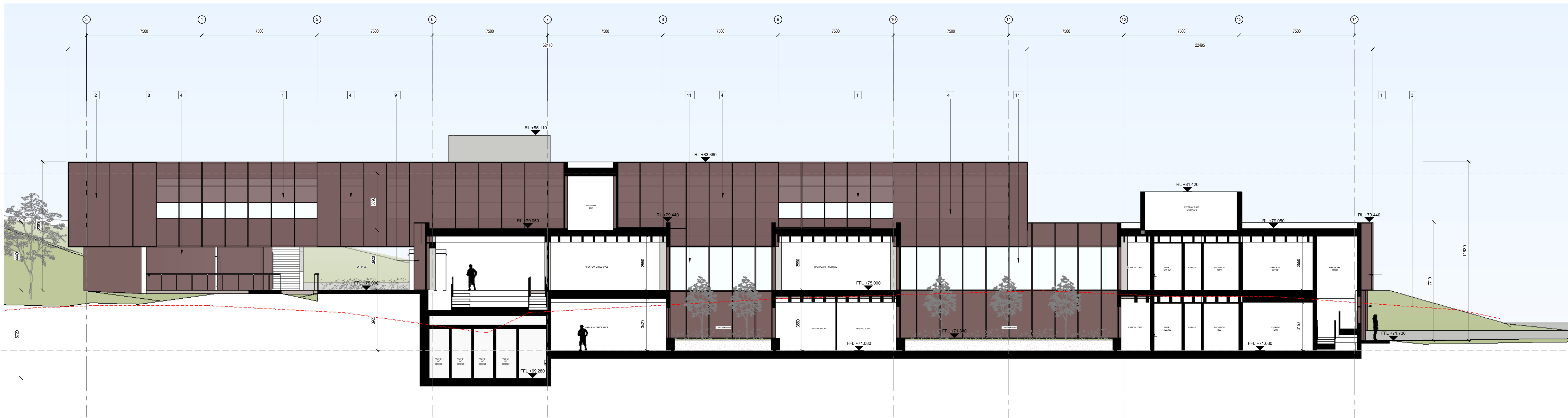


Note: Survey by Apex Surveys, July 2022  
 Datum: Mean High (OSMAD 15)  
 OS License: 2023/OSL\_NMA\_158 Monaghan County Council

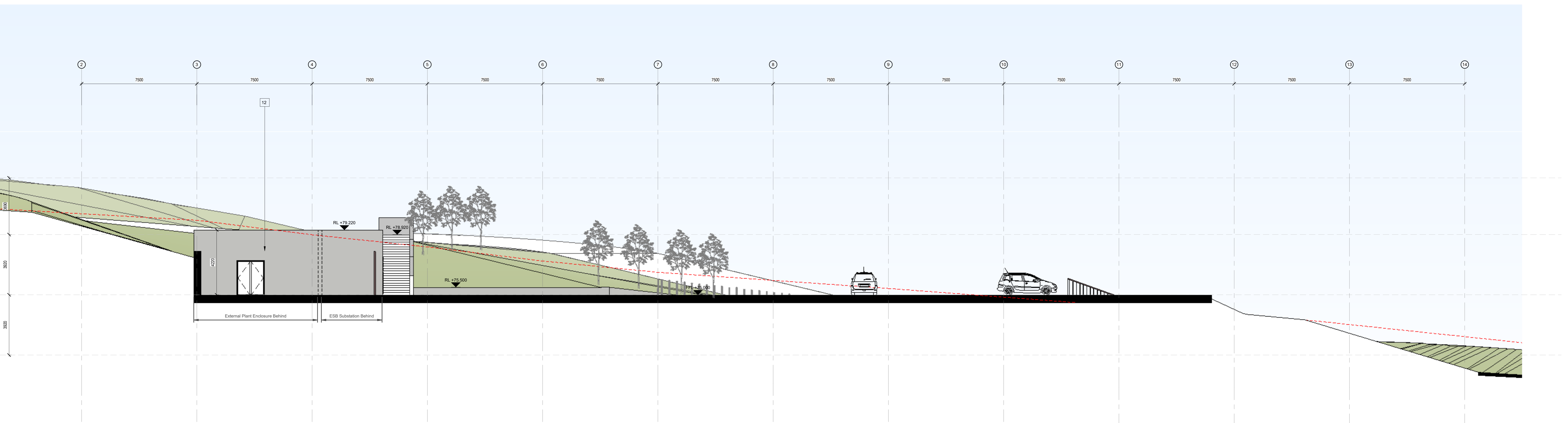
KEY:  
 Site boundary subject to planning application



- LEGEND
1. DOUBLE GLAZED CURTAIN WALLING SYSTEM WITH POWDER COATED ALUMINIUM COLOURED FINES AND PERFORATED POWDER COATED MESH IN SELECTED COLOUR
  2. COMPOSITE WALL PANEL WITH PERFORATED MESH RANGECEN GLAZING IN SELECTED POWDER COATED ALUMINIUM COLOUR
  3. DOUBLE GLAZED CURTAIN WALLING SYSTEM WITH SELECTED POWDER COATED ALUMINIUM COLOURED FINES AND PERFORATED POWDER COATED MESH IN SELECTED COLOUR
  4. PERFORATED MESH RANGECEN GLAZING IN SELECTED POWDER COATED ALUMINIUM COLOUR
  5. STRUCTURALLY GLAZED CURTAIN WALLING SYSTEM
  6. SELECTED NATURAL STONE GLAZING
  7. DOUBLE GLAZED DOOR WITH POWDER COATED ALUMINIUM FRAME TO SELECTED COLOUR
  8. POWDER COATED ALUMINIUM RAILINGS TO SELECTED COLOUR
  9. GLASS REVOLVING DOOR WITH POWDER COATED ALUMINIUM FRAME IN SELECTED COLOUR
  - 10A. DOUBLE GLAZED GLASS DOOR WITH POWDER COATED ALUMINIUM FRAME TO SELECTED FINISH
  11. DOUBLE GLAZED CURTAIN WALLING SYSTEM WITH SELECTED POWDER COATED ALUMINIUM FINISH
  12. EXTERNAL RENDER SYSTEM IN SELECTED COLOUR
  13. EXPOSED EXTERNAL SOFFIT IN SELECTED POWDER COATED ALUMINIUM FINISH
  14. PERFORATED MESH GATE IN POWDER COATED ALUMINIUM TO SELECTED COLOUR
  15. 2.1 x 2.1m BACKLIT SIGNAGE PANEL IN SELECTED FINISH TO INCLUDE MONAGHAN COUNTY COUNCIL LOGO



1 SECTION CC  
 1: 100



2 SECTION DD  
 1: 100

REV	DATE	DESCRIPTION	SA	RC
P1	11/11/2023	ISSUED FOR PLANNING	SA	RC

STATUS CODE DESCRIPTION  
**STATUTORY SUBMISSION - PLANNING PERMISSION**

CLIENT  
**MONAGHAN COUNTY COUNCIL**

PROJECT  
**Civic Offices**

DRAWING  
**PROPOSED GA SECTIONS**

PROJECT NUMBER	DATE
65308	08/09/23

SCALE@ A0:	DRAWN/CHECKED:
1: 100	RC/ SA

STATUS CODE	DRAWING NUMBER	REVISION
P3	MCCO-XX-ZZ-DR-HJL-AR-3011	P1